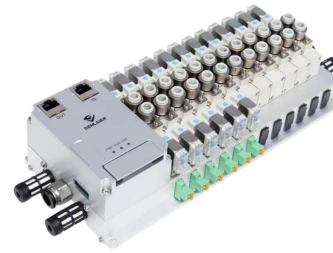


# 一代总线式阀岛

First bus-type valve terminals



## 产品特点 Product characteristics

- (1) 立式一体化结构设计、抗震动、安全性能高；
  - (2) 结构紧凑，体积更小巧；
  - (3) 采用光电隔离和滤波技术，稳定可靠；
  - (4) 采用总线控制，性能可靠，性价比高；
  - (5) 优化布线，美观，安装方便节省人工。
- (1) vertical Integrative structure design, anti-vibration, high safety performance;  
 (2) Compact structure, compact size;  
 (3) Using photoelectric isolation and filtering technology, stable and reliable;  
 (4) Adopt bus control, reliable performance, high cost performance;  
 (5) Optimized wiring, beautiful, convenient installation to save labor.



DB26 脚位定义表 Foot Definition Table

Pin No.	1	2	3	4	5	6	7	8	9	10	11	12	13	14	15	16	17	18	19	20	21	22	23	24	25	26
DX	X0	X2	X4	X6	X8	X10	X12	COM	COM	24V	24V	NC	NC	NC	NC	X15	X14	X13	0V	0V	X11	X9	X7	X5	X3	X1
DM	X0	X2	X4	X6	X8	X10	X12	COM	COM	24V	24V	X19	X17	X16	X15	X14	X13	0V	0V	X11	X9	X7	X5	X3	X1	
DO	Y10	Y11	Y13	Y16	Y19	Y22	Y25	Y28	Y31	24V	24V	Y12	Y15	Y18	Y21	Y24	Y27	Y30	0V	0V	Y14	Y17	Y20	Y23	Y26	Y29

## 选型参考 Type Selection Reference

### EC - DX32 - DX5 - 03S04D - G

- ① 通讯协议
- ② IO点数
- ③ 电磁阀型号
- ④ 单双控电磁阀数量
- ⑤ 螺纹系列

- ① 通讯协议 Communication protocols  
 EC: EtherCAT  
 CC: CC-Link  
 CI: CC-link IE  
 PN: Profinet  
 EI: EtherNet/IP  
 M3: Mechatrolink-3
- ② IO点数 The number of IO points  
 DX32: 16点输入16点输出前后顺控  
 DX32: 16 points input 16 points output  
 DM32: 20点输入12点输出前后顺控  
 DM32: 20 points input 12 points output  
 DO32: 32点输出前后顺控  
 DO32: 32 point output front and rear sequential control  
 注: 带K为上下顺控, 此选型仅全双控下支持, 参考型号为: EC-DO32K-DX5-16S00D-R  
 Note: The K band is for up and down sequential control, and this selection is only supported under full dual control.  
 Reference model: EC-DO32K-DX5-16S00D-R
- ③ 电磁阀型号 Solenoid valve model  
 DX3: SS5Y3 4V1 : 4V100M  
 DX5: SS5Y5 4V2 : 4V200M  
 DX7: SS5Y7 L10 : L10/LK10  
 DX9: SS5Y9 L14 : L14/LK14
- ④ 单双控电磁阀数量 Number of single and double control solenoid valves  
 S : 代表双线圈 S: Represents a double coil  
 D : 代表单线圈 D: Stands for single coil  
 注: 单双IO位数不超过32点 Note: Single and double IO digits shall not exceed 32 points
- ⑤ 螺纹系列 Thread series  
 G : G螺纹 G: G thread  
 R : RC螺纹 R: RC thread  
 N : NPT螺纹 N: NPT thread  
 M : 公制螺纹 M: Metric thread  
 注: 默认为G螺丝 NOTE: The default is G screw

产品型号 Product model	DX32	DM32	DO32
模块供电 Module power supply	DC24V	DC24V	DC24V
防护等级 Protection class	IP50	IP50	IP50
工作温度 Operating temperature	0~53°C	0~53°C	0~53°C
数字输入 Numeric input			
通道数 Number of channels	16	20	0
输入类型 The input type	NPN/PNP	NPN/PNP	-
额定电压 Rated voltage	DC24V	DC24V	-
输入电流 Input current	4mA (DC24V时, 典型值) 4mA (typical at DC24V)	4mA (DC24V时, 典型值) 4mA (typical at DC24V)	-
隔离方式 Isolation mode	光耦隔离 Photocoupler isolation	光耦隔离 Photocoupler isolation	-
ON/OFF响应时间 ON/OFF response time	30us/10us以内 Within 30us/10us	30us/10us以内 Within 30us/10us	-
端口保护 Port protection	过压保护 Overvoltage protection	过压保护 Overvoltage protection	-
数字输出 Digital output			
通道数 Number of channels	16	12	32
输出类型 The output type	漏型输出 Leaky output	漏型输出 Leaky output	漏型输出 Leaky output
额定电压 Rated voltage	DC24V	DC24V	DC24V
输出电流 Output current	MAX 300mA/通道 MAX 300mA/channel	MAX 300mA/通道 MAX 300mA/channel	MAX 300mA/通道 MAX 300mA/channel
隔离方式 Isolation mode	光耦隔离 Photocoupler isolation	光耦隔离 Photocoupler isolation	光耦隔离 Photocoupler isolation
ON/OFF响应时间 ON/OFF response time	12us/40us以内 Within 12us/40us	12us/40us以内 Within 12us/40us	12us/40us以内 Within 12us/40us
端口保护 Port protection	过压过流保护 Overvoltage and overcurrent protection	过压过流保护 Overvoltage and overcurrent protection	过压过流保护 Overvoltage and overcurrent protection

※注意:

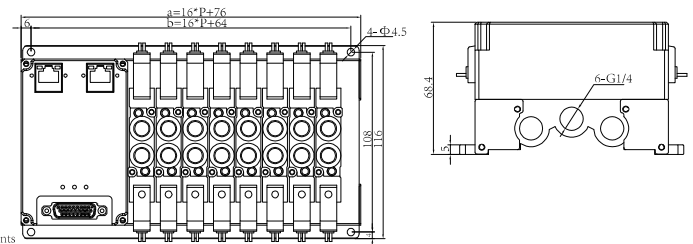
- 1、所有接线必须牢靠，24V跟0V禁止反接。
- 2、未使用到的电线禁止跟电源相接，必须安全悬空。(使用保护套)
- 3、按照规格电源的电压接线，禁止24V类型接交流电。
- 4、接线错误，可能损坏该连接系统，也可能损坏电磁阀。

Please note:

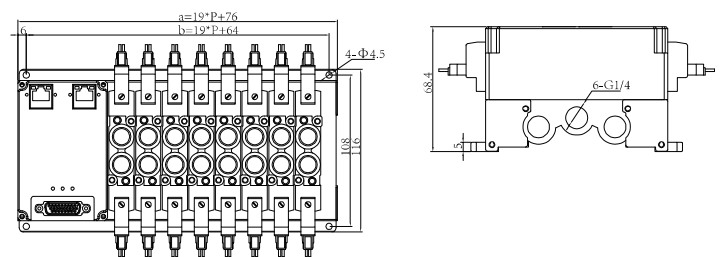
All wiring must be secure, 24 V and 0 V are prohibited from reverse connection.  
 Unused wires are not allowed to be connected to the power supply and must be safely left floating. (using a protective cover)  
 Wiring to voltage according to specified power supply, it is forbidden to connect AC power to 24 V type.  
 Wiring error may damage the connection system or electromagnetic valve

## 外形图 Dimensions

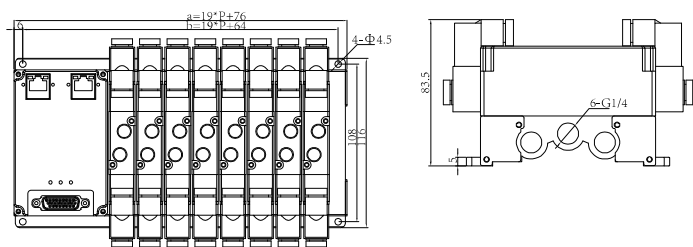
### SUN-DX5 系列 SUN-DX5 Series



### SUN-DX7 系列 SUN-DX7 Series



### 4V120系列 4V120 Series



### 4V220系列 4V220 Series

