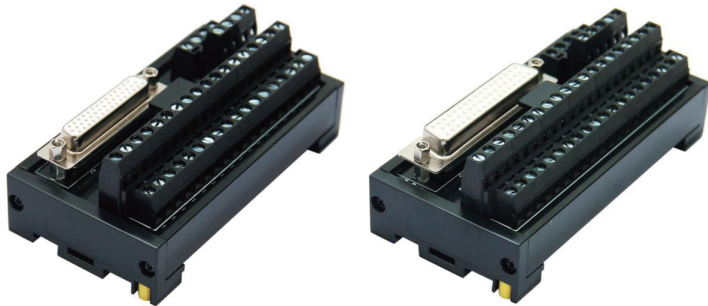


## D-SUB母头插座 端子台

D-sub female head terminal block S044/S046



S045

S046



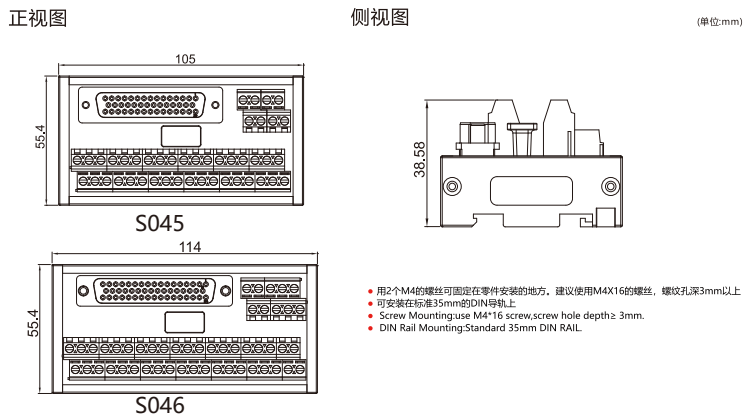
### ● 发货日期 Ship Date

17:00前订购的库存品可以当日发货 <small>Delivery immediately with confirmed order before 17:00PM day off when there is stock in the warehouse</small>	1~8个 1-8 pcs	9个以上 More than 9pcs
	次日(当日)发货 1-2 day	另定发货时间 Agreed by both parties

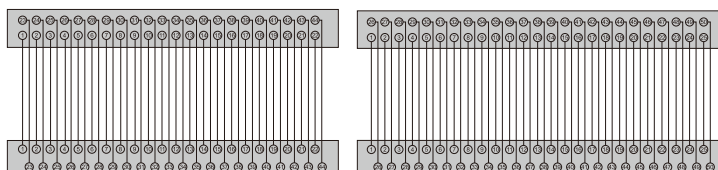
1. 最小起订量1个正常交期7~10天；
2. 特殊产品交期20天以上；
3. 非损耗品非人为损坏，一年包换，5年包修；

- 1: MOQ 1 PCS delivery date 7-10 days for regular models
- 2: more than 20 days for customerized models
- 3: Guarantee : one year refundable and 5 year warranty under condition of non-human forces damage

### 外形图 Dimensions



### 配线图 Wiring Diagram



S045(母头插座)

S046(母头插座)

### ● 特点 Features

接线端子模块布线接口结构紧凑，采用标准的D-SUB母头插座的信号线与用于连接截面直到2.5mm的导线的螺钉接线端子相连，该产品为您提供方便、快捷、低费用的布线接口技术。信号通过布线接口模块从生产区域传送到控制区域再通过一个高针位的接插件准确无误地连接在控制器上。

Terminal block makes wiring interface structure compact Signal wiring accordance with Standard D-SUB female head plug connect with terminal block in diameter 2.5mm lead screw This product offers an easy, efficient and saving-cost wiring way. The signal transmit from production area to control area and final to monitor through a high pin plug accurately.

### ● 具有以下功能 operating function as follows

- 1、接线快捷；
  - 2、可安装在TH35和G型导轨上；
  - 3、D-SUB接头采用母接头；
  - 4、采用框式压线；
- 1: easy and efficient wiring way  
 2: Can be installed on TH35 and G-type rail  
 3: D-SUB connector is in female head  
 4: Frame way to put wiring in place

### ● 部品详细参数 Parts detailed parameters

插孔连接器	主体材料 Body Material	PBTV-0防火等级	参考标准 Reference Standand	UL
	端子材料 Terminal Material	铜合金	额定电流 Rated current	2.0A
	电镀层 Plating	针角镀金	接触电阻 Contact resistance	<20毫欧
欧式接线端子	主体材料 Body Material	PA 66V-0防火等级	认证 Authenticate	UL, CE, RoHS
	端子材料 Terminal Material	磷铜	额定电流 Rated current	10A
	电镀层 Plating	镀锡	扭矩 Torque	0.4NM(3.5lb-in)
端子主体	主体材料 Body Material	PA 66V-0防火等级	认证 Authenticate	CE
	端盖材料 Cover Material	PC V-0防火等级	固定螺丝材料 Fixing screws Material	SUS304
	扣件 Fasteners	PC V-0防火等级	PCB板材料 PCB board material	FR-4

### ● 输入侧额定值/性能 Rated current and voltage specification

额定电流 Nominal operating current	1A
额定电压 Nominal coil voltage	DC24V
适合电线 For wire	1.5 mm <sup>2</sup> Following / AWG16

### ● 关联产品 Related products

S045关联产品: L110-10  
S046关联产品: L110-11

注: 见本册缆线系列

### ● 剥线长度 Wire stripping Recommendation

