

接地端子模块 S070

Earth terminal block S070

● 特点 Features

完全代替传统接地端子台；
安装方便、快捷。

Replaces conventional wiring method;
Convenient and quick installation.

● 部品详细参数 Parts detailed parameters

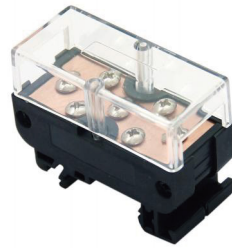
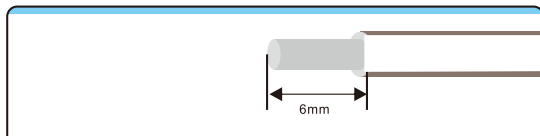
MIL 插孔连接器	主体材料 Body Material	PBT V-0防火等级	参考标准 Reference Standard	UL
	端子材料 Terminal Material	铜合金	额定电流 Rated current	2.0A
	电镀层 Plating	针角镀金	接触电阻 Contact resistance	<20毫欧
欧式 接线端子	主体材料 Body Material	PA 66V-0防火等级	认证 Authenticate	
	端子材料 Terminal Material	铜	额定电流 Rated current	10A
	电镀层 Plating	镀锌	扭矩 Torque	0.4NM(3.9lb-in)
端子 主体	主体材料 Body Material	PA 66V-0防火等级	认证 Authenticate	CE
	端盖材料 Cover Material	PC V-0防火等级	固定螺丝材料 Fixing screws Material	SUS304
	扣件 Fasteners	PC V-0防火等级	PCB板材料 PCB board material	FR-4

● 发货日期 Ship Date

17:00前订购的库存品可以当日发货 <small>Delivery immediately with confirmed order before 17:00PM day off, when there is stock in the warehouse</small>	1~8个 1-8 pcs	9个以上 More than 9pcs
	次日(当日)发货 1-2 day	另定发货时间 Agreed by both parties

1. 最小起订量1个正常交期7~10天；
 2. 特殊产品交期20天以上；
 3. 非损耗品非人为损坏，一年包换，5年包修；
- 1: MOQ 1 PCS delivery date 7-10 days for regular models
2: more than 20 days for customized models
3: Guarantee : one year refundable and 5 year warranty under condition of non-human forces damage

● 剥线长度 Wire stripping Recommendation



S070-1
(7位)



S070-2
(17位)



S070-3
(27位)

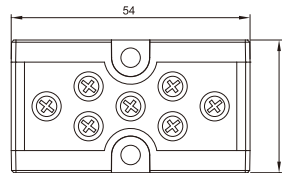


● 输入侧额定值/性能 Rated current and voltage specification

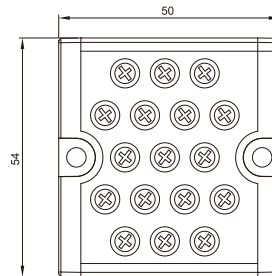
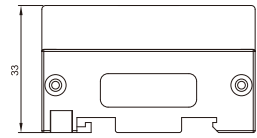
额定电流 Nominal operating current	10A
额定电压 Nominal coil voltage	DC24V/220V AC

外形图 Dimensions

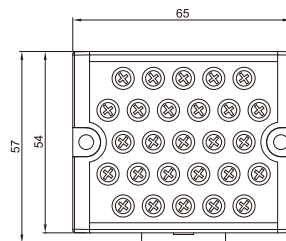
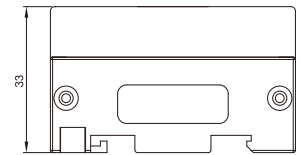
正视图 侧视图 (单位:mm)



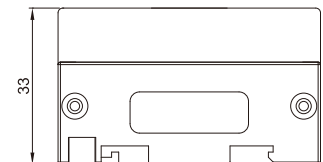
S070-1(7位)



S070-2(17位)



S070-3(27位)



- 用2个M4的螺丝可固定在零件安装的地方，建议使用M4X16的螺丝，螺钉孔深3mm以上
- 可安装在标准35mm的DIN导轨上
- Screw Mounting: use M4*16 screw, screw hole depth ≥ 3mm.
- DIN Rail Mounting: Standard 35mm DIN RAIL.