

## 8位输入输出端子模块 S143

8-bit input output terminal module S143

### ● 特点 Features

本接线板为终端输入型插口板，对应各种终端输入信号连接使用；配有8组3P信号输入口，可接入2线制或3线制信号；使用10P端子台与控制器端连接，方便进行远程控制使用；采用动作LED显示，动作状态一目了然；配合本公司其它产品，完全实现高效率省配线的连接；

This wiring board is a terminal input socket board, which is used for connecting various terminal input signals. Equipped with 8 groups of 3P signal input ports, which can access 2-wire or 3-wire signals; 10P terminal is used to connect with the controller, which is convenient for remote control. Adopt action LED display, the action state is clear at a glance; Cooperate with other products of our company, and fully realize high-efficiency and wiring-saving connection.

### ● 部品详细参数 Parts detailed parameters

MIL 插孔连接器	主体材料 Body Material	PBT-V0防火等级	参考标准 Reference Standard	UL
端子材料 Terminal Material	铜合金		额定电流 Rated current	2.0A
电镀层 Plating	锌角镀金		接触电阻 Contact resistance	<20毫欧
欧式接线端子	主体材料 Body Material	PA 66V-0防火等级	认证 Authenticate	
端子材料 Terminal Material	磷铜		额定电流 Rated current	10A
电镀层 Plating	镀锡		扭矩 Torque	0.4NM(3.9lb-in)
端子主体	主体材料 Body Material	PA 66V-0防火等级	认证 Authenticate	
端盖材料 Cover Material	PC V-0防火等级		固定螺丝材料 Fixing screws Material	SUS304
扣件 Fasteners	PC V-0防火等级		PCB板材料 PCB board material	FR-4

### ● 发货日期 Ship Date

17:00前订购的库存品可以当日发货 <small>Delivery immediately with confirmed order before 17:00PM day off when there is stock in the warehouse</small>	1~8个 1-8 pcs	9个以上 More than 9pcs
	次日(当日)发货 1-2 day	另定发货时间 Agreed by both parties

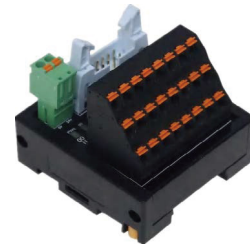
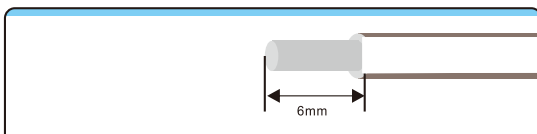
- 最小起订量1个正常交期7~10天；
  - 特殊产品交期20天以上；
  - 非损耗品非人为损坏，一年包换，5年包修；
- 1: MOQ 1 PCS delivery date 7-10 days for regular models  
2: more than 20 days for customized models  
3: Guarantee : one year refundable and 5 year warranty under condition of non-human forces damage

### ● 关联产品 Related products

L110-1 L110-1D L116-1

注：见本册缆线系列

### ● 剥线长度 Wire stripping Recommendation



S143



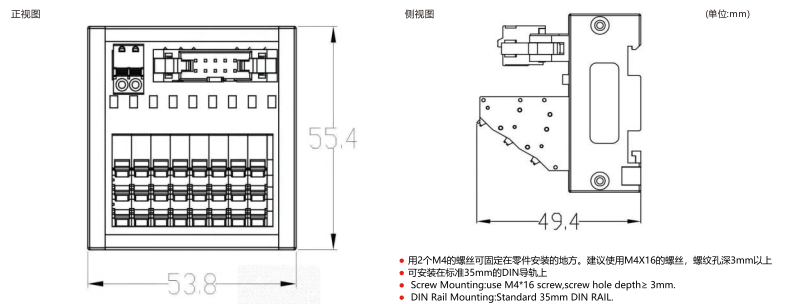
### ● 输入侧额定值/性能 Rated current and voltage specification

额定电流 Nominal operating current	1A
额定电压 Nominal coil voltage	DC24V
适合电线 For wire	1.5 mm <sup>2</sup> Following / AWG16

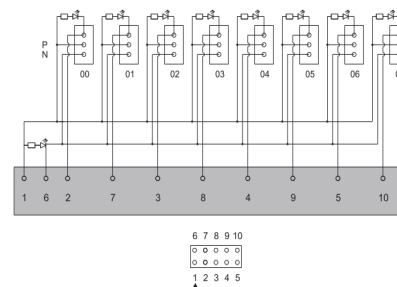
### 输入/输出侧对应 Corresponding Input/Output Devices

Manufacturers	PLC Module
Panasonic FpO FpΣ series	FP0-C16T/C16CT(IN)
	FP0-C16P/C16CP(IN)
	FP0-C32T/C32CT/T32CT(IN)
	FP0-C32P/C32CP/T32CP(IN)
	FP0-E16T/P(IN)
	FP0-E32T/P(IN)
	FP0-E8X
	FP0-E16X
	FPΣ-C28(IN Ministry)
	FPΣ-C32(IN Ministry)
输出侧对应 Corresponding output Devices	Photoelectric Switch, Button Switch, Fiber

### 外形图 Dimensions



### 配线图 Wiring Diagram



S143