

面板式安装RJ45接口转换器

Panel mounted RJ45 interface converter

产品特点 Product characteristics

前后均为RJ45接口,用于网线的转接。
带防尘罩,防止长时间不用时灰尘的进入。
超五类线缆及六类线缆均可使用。
可直接安装于开孔面板上,并且采用圆孔安装,避免了加工方孔的麻烦。
带屏蔽,耐干扰性能优异。

Both front and back are RJ45 interfaces, which are used for network connection;
Dust-proof cover to prevent dust from entering when not in use for a long time;
Ultra Five Cables and Six Cables can be Used;
It can be directly installed on the open panel and installed with round holes,
avoiding the trouble of processing square holes;
With shielding, excellent anti-interference performance.



接线图 Connection Diagram



注: 本公司目前只有C-RJ45-28-180和C-RJ45-23-90 两款产品
后续会推出新产品, 请咨询相关销售人员。

规格参数 Specification Parameters	
连接器 Connector	RJ45 (接口) RJ45
类别 category	Cat5E/Cat6
接线 Connection mode	同号接线 Same number wiring
阻燃等级 Flame Retardant Grade	UL94V-0
使用温度范围 operation temperature	-10~+60°C
材质 Texture of material	外壳 Shell: ABS 端子 Terminal: 预处理—镀镍, 表面—镀金 Gold plating

选型参考 Type Selection Reference

产品名称 product name	安装尺寸 Installation dimensions	出线角度 Outgoing angle	传输速率 transmission speed
C-RJ45	28	180	CAT5

1	产品名称 product name	Connector
2	安装尺寸 Installation dimensions	Ø28mm和Ø23mm Connector
3	出线角度 Outgoing angle	180°和90° Connector
4	传输速率 transmission speed	CAT5(100M传输速率) CAT6(250M传输速率) CAT7(600M传输速率) CAT7A(1000M传输速率) CAT5(100M transmission speed) CAT6(250M transmission speed) CAT7(600M transmission speed) CAT7A(1000M transmission speed)

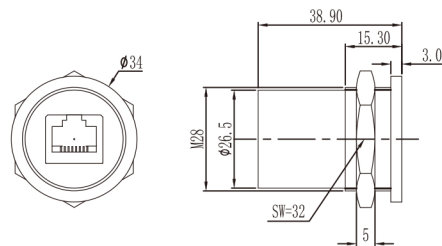
发货日期 Ship Date

17:00前订购的库存品可以当日发货	1~8个 1-8 pcs	9个以上 More than 9pcs
次日(当日)发货 1-2 day	另定发货时间 Agreed by both parties	

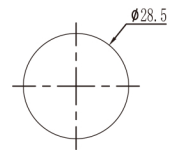
1. 最小起订量1个正常交期7~10天;
 2. 特殊产品交期20天以上;
 3. 非损耗品非人为损坏, 一年包换, 5年包修;
- 1: MOQ 1 PCS delivery date 7-10 days for regular models
2: more than 20 days for customized models
3: Guarantee: one year refundable and 5 year warranty under condition of non-human forces damage

外形图 Dimensions

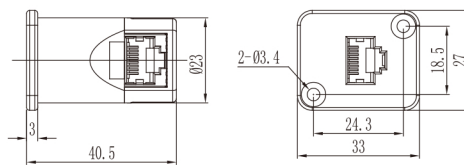
C-RJ45-28-180



钣金开孔尺寸
Sheet metal opening size



C-RJ45-23-90



钣金开孔尺寸
Sheet metal opening size

